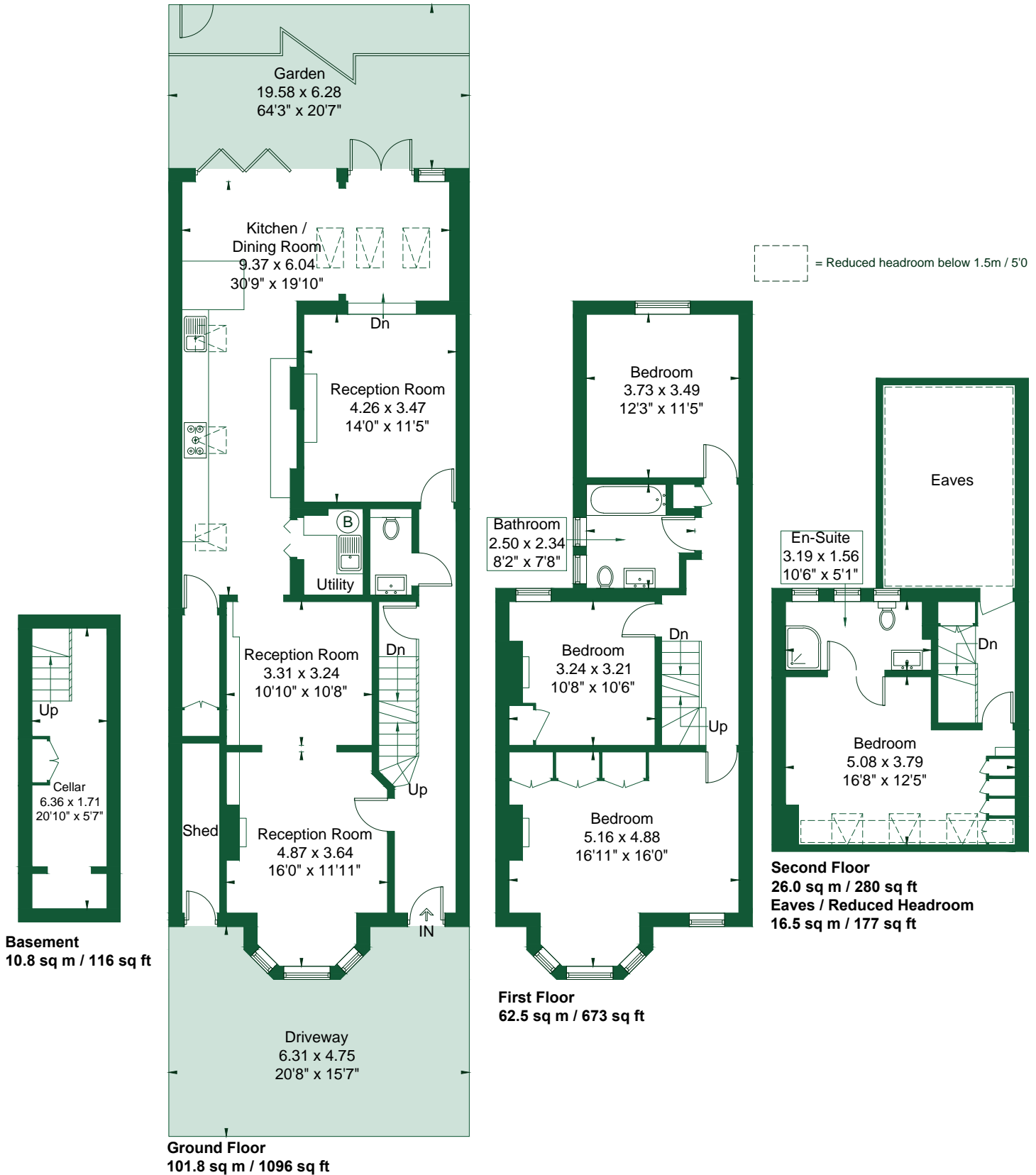


# Wilmington Avenue

Approximate Gross Internal Area = 201.1 sq m / 2165 sq ft  
 Eaves Storage / Reduced Headroom = 16.5 sq m / 177 sq ft  
 Total = 217.6 sq m / 2342 sq ft



Although every attempt has been made to ensure accuracy, all measurements are approximate.  
 The floorplan is for illustrative purposes only and not to scale.

© www.perspective.co.uk